

TELL US WHAT YOU THINK OF THE UPDATES TO THE JOINT MELKSHAM NEIGHBOURHOOD PLAN 2

Thursday 20th June - Thursday 15th August

This summer there is another chance to have your say on the updates to our Neighbourhood Plan. Specifically about allocations for housing and employment, as well as about protecting areas between the town and our villages known as 'green wedges'. It's the next stage in the journey of keeping our communities' Neighbourhood Plan bang-up-to-date and as strong as it can be.

IN 2023...

We consulted with you back in October 2023 as part of our first formal public consultation (Pre-Submission Draft, Regulation 14, Consultation) on the 2nd edition of the Joint Melksham Neighbourhood Plan - JMNP2 for short.

Thank you if you took part in this consultation on what we are now calling the pre-submission draft A of JMNP2. We received over 980 individual comments! These comments have been very helpful to us and we are currently revising and updating our Plan as a result. Overall people were supportive and generally positive and constructive in their comments.

FEEDBACK FROM 2023

There are no other changes to the JMNP2 at this stage, which remains as it was in the 2023 Consultation. All previous comments submitted to the 2023 Consultation are still valid, and are being taken into consideration.

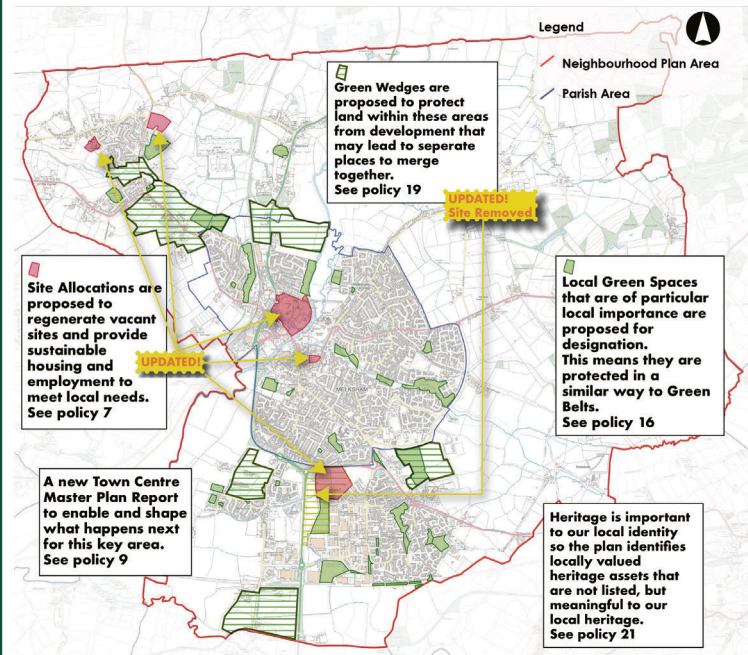
There is no need to submit these comments to us again.

IN 2024...

Since the 2023 Consultation on JMNP2, significant new information and further work has been done to proposed site allocations at Melksham and Whitley.

In addition, despite local opposition, outline planning permission was granted

through appeal for 210 dwellings and a 70-bed care home on land South of Western Way. Our updated plan proposes its allocation to make these numbers count, minimise any harm the development may cause, and maximise the community benefits it delivers.



REVISED Policy 7.1 Cooper Tires (Now allocates this site for at least 150 homes to make sure this site is viable to re-development).

REVISED Policy 7.2 Land at the Former Melksham Library, Lowbourne House and Car Park (The updates to this policy provide more detail to enable the development of up to 50 extra care dwellings).

NEW Policy 7.6 Land South of Western Way, Bowerhill (This policy enables more local influence and input into the detail that still needs to be resolved for 210 dwellings and the 70-bed care home granted outline permission through Appeal).

REVISED Policy 7.3 Land at Whitley Farm (The updates to this allocation provide more detail to enable the sensitive development of about 15 dwellings around the grade II listed farm barn which will be conserved and re-used).

CHANGES WE ARE CONSULTING ON

NEW Policy 7.7 Land at Middle Farm (This new policy combines two previous allocations into one, resulting in a smaller area overall for about 55 dwellings and includes more landscaping to protect the countryside edge).

GREEN WEDGES

Green Wedges are areas that we wish to see protected from development that could lead to separate places joining up.

REVISED Policy 19 - Green Wedges (One area included land South of Western Way which now has outline planning permission, and so the update to this policy is the removal of a Green Wedge. The policy itself has also been updated to enable more flexibility for when employment development in the Green Wedges could be acceptable).

HOW CAN I COMMENT ON THE UPDATES IN DRAFT B OF THE JMNP2?

ONLINE

The draft Plan and evidence base reports are available to view on the 'Neighbourhood Plan 2' pages of the Neighbourhood Plan website: www.melkshamneighbourhoodplan.org

HARD COPIES

- at Melksham Town Hall
- at the Parish Council offices on the first floor of the Community Campus
- at Melksham Library
- at Sprockets Cafe at Spindles Bike Shop, Top Lane, Whitley

DROP-IN SESSIONS

- Friday 19th July** 4pm - 7pm Melksham Community Campus
- Saturday 20th July** 11am - 2pm Shaw Village Hall
- Tuesday 23rd July** 5pm - 8pm Bowerhill Village Hall

Please submit your views to us via email: contact@melkshamneighbourhoodplan.org
Or you can drop off any views in writing to Melksham Town Hall or the Parish Council office.

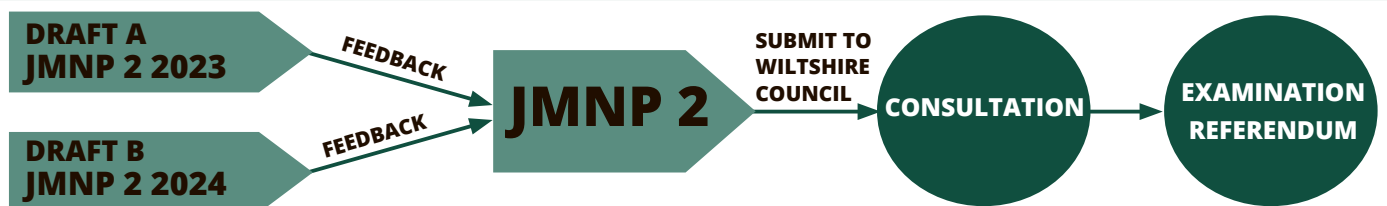
TELL US WHAT YOU THINK!

8 WEEK CONSULTATION COMMENCING THURSDAY 20TH JUNE

DEADLINE FOR COMMENTS THURSDAY 15TH AUGUST

WHAT HAPPENS NEXT?

After August 15th, the Steering Group will consider all comments from 2023 and 2024, and prepare a final submission version of the Neighbourhood Plan.



- Sign up to the mailing list
- Visit the website which is regularly updated www.melkshamneighbourhoodplan.org
- Follow the Facebook page [MelkshamNeighbourhoodPlan](https://www.facebook.com/MelkshamNeighbourhoodPlan)

- Attend future consultation events
- Read regular updates in the Melksham News
- Email us on contact@melkshamneighbourhoodplan.org

Melksham Town Council
Town Hall, Market Place, SN12 6ES
Tel: 01225 704187

Melksham Without Parish Council
First Floor, Melksham Campus, SN12 6ES
Tel: 01225 705700